

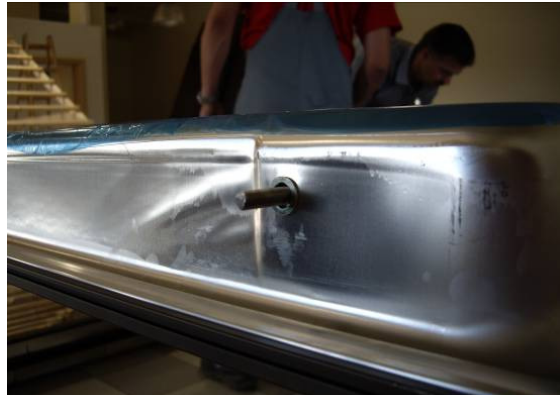
Installation Guide for Riposol AK – In-roof version



Comment: When installing single row systems, steps (6), (12), (13) and (14) can be ignored.

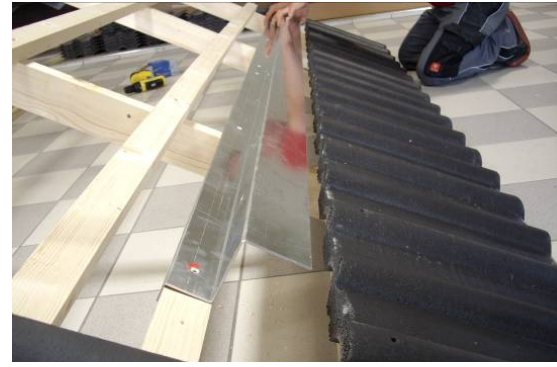
1) **Screw in the fastening bolts**

Before starting the actual installation, the enclosed bolts must be screwed into the riveting nuts on the bottom side of the collectors. The sensor tubes must be situated in the upper area on the side of the collector.



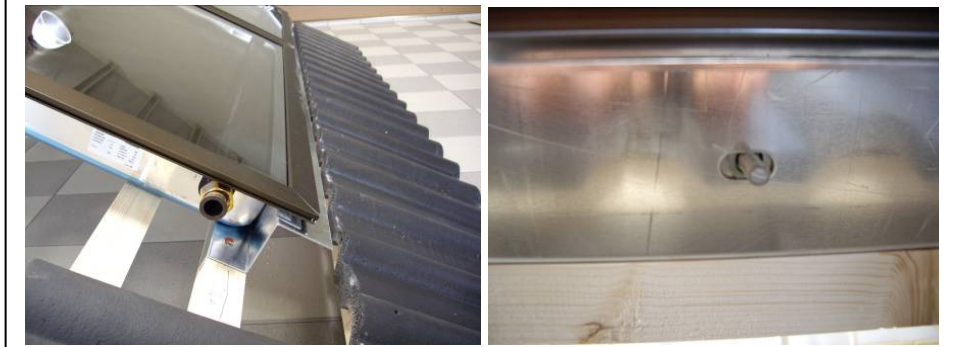
2) **Install the support rail**

The support rail must be screwed to the additional batten installed as per the drawing (S.2). The distance from the side tile edge to the start of the support rail should be 16 cm. Use the drawing on page 2 for the installation of the necessary additional batten. *The bottommost batten must be installed on its edge!*



3) **Insert the collector**

Afterwards, the collector must be placed on the support rail. When doing this, make sure that the screwed-in bolts pass through the elongated holes of the support rail. After positioning the collector, the side tiles must be removed and only replaced after completion of the edging.



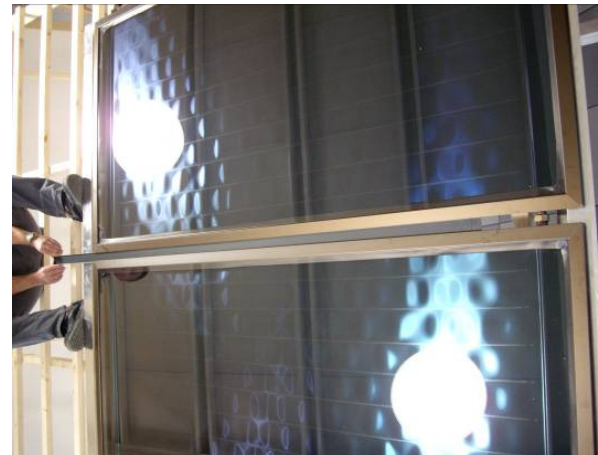
4) **Fastening bracket**

The collector is screwed to the roof batten using a fastening bracket on the top end of the collector. For multi-row collector bays, the top row is installed once again by fastening the support rail.



5) **Insert centre cover**

After fastening adjoining collectors, the connection strip must be inserted between the collectors from the top to the bottom.



6) **If another row is to be installed**

In this case, follow the installation for the first row or follow the drawing.



7) **Secure the wooden wedge**

The wooden wedge must be screwed on at the top end of the collector row(s) according to the drawing. Here, 2 additional battens must be screwed together (as per drawing).



8) **Position the front corner to the left**

The distance from the collector to the inner side of the metal sheet is 114 mm.



9) **Screw together the front corner on the left**

Afterwards, the front section must be screwed to the support rail with sheet metal screws.



10) **Side sheet metal edging**

The side section must be hooked into the clip profile of the collector and pushed a few centimetres over the front corner. Afterwards, it must be fastened to the roof batten with a **holder**. The side sheet metal edging is mounted to the left and right according to the same schema.



11) **Adaptation of the front side to the shape of the tiles**

The flexible section of the front side must be adapted to the shape of the tiles.



12) **Install the side connecting piece if applicable**

For multi-row installations, an additional connecting section must be installed – the overlap is approx. 11 cm.



13) **Cover between the collector rows if applicable**

The centre cover must be inserted between the collector rows



14) **Side sections of another row if applicable**

Here again, a side section is hooked into the clip profile so that the connecting section is overlapped.



15) **Back section**

The sheet metal of the back section is pushed over the collector's edge as shown in the drawing and secured to the roof batten with the enclosed **supports**.



16) **Covering**

At the end, the edge of the edging is covered. **Since not all tiles are the same width, the tiles to the side of the sheet metal edging must be cut if necessary.**

